



Masonic
Charitable Foundation

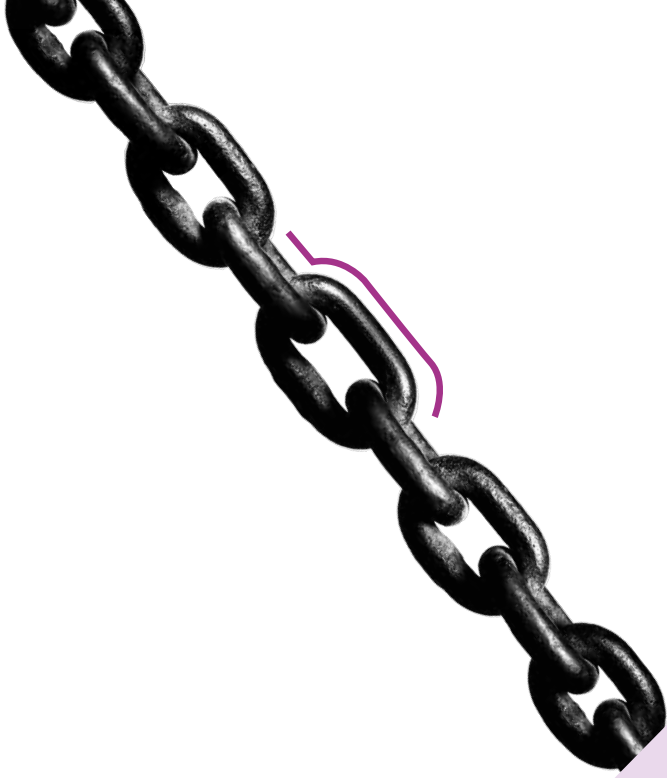


Our Impact 2020/21

On behalf of Freemasonry, we transformed our ways of working to meet the needs of individuals and communities affected by COVID-19.

Building Better Lives





CONTENTS

Message from the Chairman and Chief Executive	04
Our year in brief – 2020/21	06
What we said we'd do in 2020/21	08
A spectrum of support	14
Adapting our ways of working	20
Working in partnership	23
Celebrating five years as the Freemasons' charity	26
What do our beneficiaries think?	27
Our plans for next year	29
Money in, money out	31
About Freemasonry	34

MESSAGE FROM THE Chairman and Chief Executive

Welcome to our 2020-21
Impact Report.

This year marks the fifth anniversary since the launch of the Masonic Charitable Foundation, (MCF, the Freemasons' charity) and this report celebrates the significant achievements that have taken place during our formative years. There is, however, no escaping the fact that our recent work has been shaped by the challenges of the COVID-19 pandemic.

In many ways, the pandemic was a perfect storm: our main source of funds – donations from Freemasons – reduced significantly as lodge meetings and social events were cancelled; the demand for support from individuals and charities rose dramatically; and our ways of working had to be adapted as our staff, suppliers and supporters moved to remote working.

Despite these challenging times, it has been remarkable to witness the resilience, ingenuity and commitment shown by everyone involved with the MCF – staff, volunteers, trustees and our support networks in the Provinces. A special mention must go to the RMBI Care Company, an integral part of the MCF,

which has worked tirelessly to keep residents, staff and visitors at their care homes safe during the most difficult of circumstances.

Over the previous five years since the MCF formed, we have encouraged opportunity, promoted independence and improved wellbeing for over 32,000 people directly, as well as for many more through the work of over 3,000 charities who successfully applied for one of our grants. In total, we have awarded support amounting to over £90 million since 2016 – around £52,000 per day!



Despite the challenges of the pandemic, we are pleased to confirm that we maintained our core services and achieved most of our planned strategic objectives. We are particularly proud that the MCF was able to play an integral role in Freemasonry's overall charitable response to COVID-19.

Working in partnership with the United Grand Lodge of England (UGLE) – the national membership body for Freemasonry – as well as Metropolitan and Provincial Grand Lodges across England and Wales and overseas districts, we awarded £4.7 million in grants to support local communities through COVID-19. This included funding personal protective equipment for key workers, touchscreen tablets for care home residents and hospital patients, and provided food for some of the most vulnerable people in society. In addition, through the strategic partnerships we established with national charities, we have funded services to improve mental health, educational outcomes and to tackle loneliness in old age in the wider community.

These additional COVID-19 grants programmes are a further example of Freemasonry – through the MCF – increasingly looking beyond the membership; acting as a force for good in wider society by reaching out and supporting local and community causes. As you will see throughout this report,

reaching out beyond Freemasonry is a key aim of our first and current five-year strategy and this is something with which all Freemasons should take great pride. This strategy was guided by the vision of our founding Chairman and Deputy President, James Newman OBE, who retired this year; we are both grateful for his support and for his years of service to the MCF and RMBI Care Co; and we wish him every success for the future.

Building on the success of our first five years, the Board will be turning its attention to the future to ensure the MCF remains able to deliver life-enhancing support, on behalf of Freemasonry, in a manner that is efficient, effective and in alignment with the aims of our partners. In particular, we plan to continue the trend of looking out to the wider community when considering how best to expand our support and services. In our view, the collaborative approach we have taken with UGLE, Provincial Grand Lodges and our charity-sector partners during the pandemic provides a firm basis for delivering this new strategy, albeit – we hope – in more normal circumstances.

We hope you enjoy reading this Impact Report.

Sir Paul Williams, OBE, KStJ, DL
DEPUTY PRESIDENT AND CHAIRMAN

Les Hutchinson
CHIEF EXECUTIVE

Our year in brief 2020/21

We adapted and developed our range of support to help the most vulnerable and disadvantaged people in society



£20.5m

of charitable support – funded entirely through the donations Freemasons, their families and friends – was awarded by the Masonic Charitable Foundation through



6,571 grants.

Of these grants,

23 per cent

totalling

£4.7m



focused on supporting people across society through COVID-19.

Including our work, Freemasonry contributed

£51m to charitable causes this year.

Our year in NUMBERS

More than **1,000**
local and national charities funded

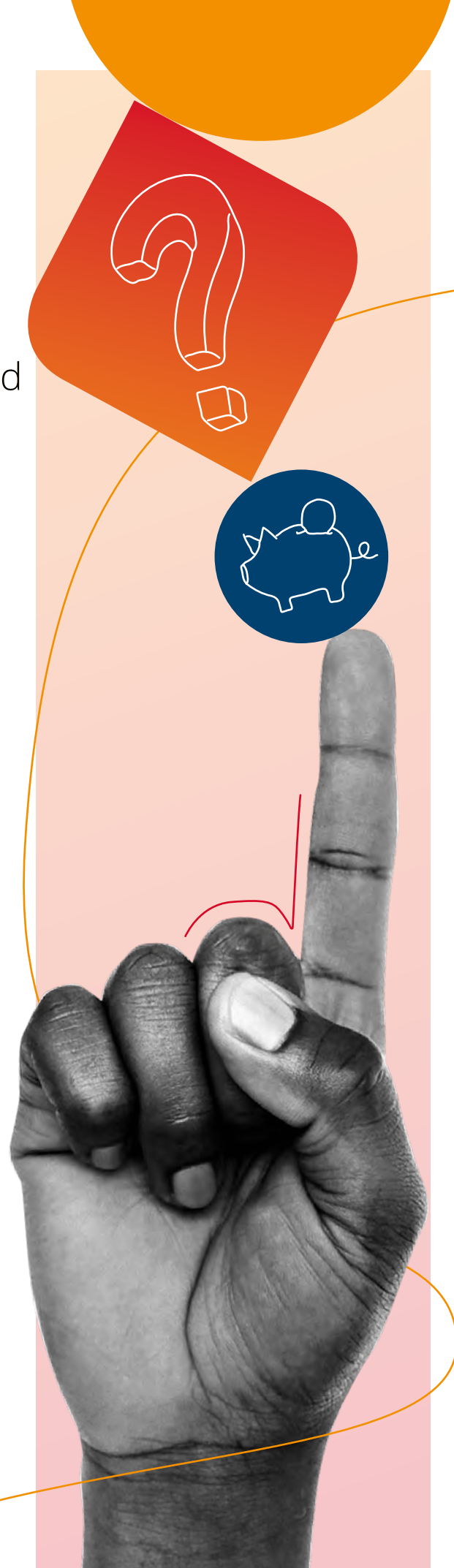
3,559
disadvantaged individuals
or families supported

13,206
enquiries answered from people
asking for help and guidance

3
new grant-making programmes
launched to provide additional
funding to communities

£45,000
given to two disaster
relief appeals

860
residents were provided
high-quality care in our
RMBI Care Co. homes



What we said we'd do in 2020/21



SUPPORTING THOSE IN NEED



Goal

In response to the coronavirus pandemic we will adapt our support for families, individuals and charities.



Why?

To ensure that those most in need throughout the crisis get appropriate support in the most effective way possible.



Status

Achieved! We provided a total of £4.7M in funding specifically in response to the impact of COVID-19. £3.8M of this was additional funding in the form of 583 grants. Over £1 million was provided directly to 518 individuals. Thankfully government support such as furlough, mortgage holidays, rental protection, business rate relief and other measures provided additional help to families in need. As these initiatives come to an end our support may again be needed.



Goal

We will explore ways to extend our mental health support to children aged under the age of 17.



Why?

Our counselling service is limited to adults and we know that there are many children and young people that need our support also, however providing support to this age group in more complicated and often complex.



Status

Not yet achieved. Working closely with our service provider, we have agreed a programme of bespoke support for children and young people, however, due to the impact of COVID-19 on recruitment we have been unable to launch the service. Our aim is to get the programme underway in 2021.

PEOPLE AND VOLUNTEERS



Goal

We want to train and support our staff and volunteers to use video conferencing to increase effectiveness and closer working across our activities.



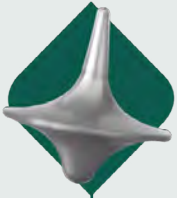
Why?

COVID-19 required all members of staff and volunteers to work fully remotely. We needed to ensure we worked closely together, allowing us to continue delivering our support and services with as little disruption as possible.



Status

Achieved! As the charity moved to full remote working, we embraced video technology for collaborative working and meetings. All of our Board, Committee and Annual General meetings were held virtually and staff reported increased working efficiency, meaning video technology is something we will continue to use.



Goal

All necessary MCF staff, Visiting Volunteers and Trustees will have undertaken appropriate DBS checks and undergone training in equality and diversity.



Why?

For a charity supporting vulnerable people we need to ensure our staff and volunteers are fully DBS compliant. As an organisation that values and promotes equality and diversity, it is fundamental that all those connected to us are fully and appropriately trained.



Status

Achieved! All relevant staff and volunteers have been vetted through the Disclosure and Barring Service. Equality and diversity has been added to the ongoing training undertaken by all staff and Trustees.



Goal

We will develop a wellbeing strategy to help staff recognise the importance of self-care and help reduce stress in the workplace.



Why?

Our staff are our most important resource and we know they work tirelessly to provide support to those in need, our donors and one another. We need to ensure they are happy and healthy in order to carry out their work.



Status

Achieved! We have a broad programme of staff wellbeing initiatives in place, including support for stress and anxiety, mental health awareness, resilience training and counselling for staff that would like it. We also have a comprehensive employee assistance programme.

SUPPORTING CHARITIES IN PARTNERSHIP WITH PROVINCES



Goal

We will enhance our Charity Grants programme with a new matched-funding scheme whereby we work with Provinces to co-fund local projects, helping locally-raised charitable funds go even further. We will also provide additional grant funding to Provinces that are actively fundraising for the MCF through a festival appeal.



Why?

This funding will be used to support local charities, allowing Provinces to demonstrate how some of the money raised for the MCF returns to their areas and supports local communities in need.



Status

Achieved! We awarded 285 matched-funding grants totaling £437,139 to 46 out of 48 Provinces, and 45 festival grants totaling £94,152.

REACHING OUT



Goal

We will acknowledge and commemorate those who have left us a legacy in their will.



Why?

We want the families and friends of those that have remembered us in their will to know how grateful we are for their support and that they are not forgotten by the MCF.



Status

Achieved! Our new website includes a page dedicated to those that have been generous in leaving a legacy to our charity in their will.



Goal

We will launch a new website with improved practical guidance and support.



Why?

With increasing numbers of enquirers seeking guidance from us we want to provide relevant and up-to-date information about how to access the support we offer, as well as provide tools to support potential applicants, beneficiaries, volunteers and fundraisers.



Status

Achieved! Our new website launched in June 2020 with enhanced functionality and easier navigation for users. Since its launch, we have seen a 147 per cent increase in average monthly visits to our website. In addition, we have recently launched an eligibility tool to help people establish whether they qualify for our support.

FUNDRAISING



Goal

We will develop new ways to donate digitally, for use in lodge meetings and community fundraising events.



Why?

As the long-term impact of COVID-19 on fundraising became clear, we needed to ensure our supporters were still able to donate to the MCF even if they could no longer meet and take part in traditional fundraising events.



Status

Achieved! Through digital donations we created new cashless ways for people to support the MCF and the causes they care about by simply scanning a QR code using a digital device or clicking a unique URL. Since its launch in August 2020, we have already received over 2,700 digital donations totaling more than £73,000.



Goal

We will update our support tools and guidance for fundraisers, and deliver a Festival Forum event for all Provinces actively fundraising for the MCF.



Why?

We must ensure our fundraisers have all the support and guidance to empower them to fundraise effectively in accordance with Institute of Fundraising best practice.



Status

Achieved! We successfully delivered our first ever virtual Festival Forum with attendance from all festival Provinces and those about to join the festival fundraising programme. We have also held seven festival drop in sessions where people could access support, whilst the Fundraising team has attended 45 festival workshops, events and seminars to support Provinces in festival.



Goal

We will roll out a free will-writing service, available to everyone regardless of their connection to Freemasonry.



Why?

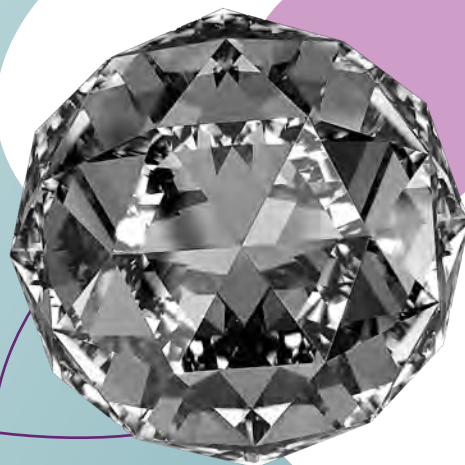
We know that legacy donations are a vital element of our charitable income and that many people have not yet completed a will. We feel that we can provide a vital service to society by covering the cost of writing a will, whether or not you are a Freemason.



Status

Achieved! To make the process of making a will as easy as possible, we are collaborating with The Goodwill Partnership to offer a free home visit or over the phone will-writing service to anyone that wants to write a will. Find out more about our free will-writing service, visit mcf.org.uk/legacies.

A spectrum OF SUPPORT



We continued to respond and adapt to the needs of society

In response to the COVID-19 pandemic, we adapted our support and services to help the most vulnerable members of local and masonic communities across England, Wales, the Channel Islands and overseas Districts. Alongside our COVID-19 response, we continued to support individuals and charities in need irrespective of the global climate.

All our work is fully-funded and carried out on behalf of Freemasonry. Without the increased generosity of Freemasons, their families and friends over the last year, we would not have been able to respond to the needs of our communities as quickly, efficiently or as impactful as we did.



Our support for... daily living

We awarded

3,025

grants to

2,273

families or individuals struggling with the cost of everyday living, at a total cost of

£8,442,307

240

of these grants to

204

families or individuals directly reflected the struggles of furlough, lack of work or sick leave as a result of COVID-19, and totalled

£810,658



On behalf of Freemasonry, we responded to the needs of older, isolated members of society and provided a

£250,000

grant to

AGE UK'S

Emergency Coronavirus Appeal. In addition to our partnership funding, this grant will help them to tackle the rise of social isolation and loneliness that stemmed from the pandemic.



Our support for... children, young people and education

We provided

999

grants to

665

children and young people to ensure they had access to the same educational opportunities as their peers, which amounted to

£1,757,071

324

children and young people – almost half of those supported – were provided laptops and other IT equipment specifically to help continue their learning from home whilst lockdown measures were in place, at a cost of

£171,150



Freemasonry continued to support vulnerable and disadvantaged children through lockdown through our

£250,000

emergency grant to

BUTTLE UK'S

Chances for Children campaign which, as well as providing IT equipment, helped the charity cover the cost of other items such as books and toys to keep children engaged.



Our support for...health, care and wellbeing

We provided

1,327

grants to

1,073

people at a cost of

£2,361,004

to help them live healthier and more independent lives.

Although we were able to support over one thousand people, this area of our work saw a 37 per cent decrease in value from the year prior, as the NHS and private health providers refocused their efforts on protecting society from the devastating effects of COVID-19. We therefore made a conscious decision to pause most of our grants for hospital referrals and operations to support the health sector through this difficult phase.



In contrast, our

COUNSELLING

support rose by 29 per cent from the year prior, with

583

people accessing the free and confidential service to support them through life's challenges, a service which cost

£500,782



Freemasons further supported people's mental health across England and Wales, through our

£250,000

grant to

MIND'S

emergency appeal, which will help fund their services that were otherwise affected by lack of funding through the pandemic.

A deep dive into our grants to charities

Over the past year, Freemasonry and the MCF has worked together to increase and enhance our support for local and national charities in England, Wales and the Channel Islands, to help tackle some of society's most pressing issues, including the coronavirus pandemic.

We are proud that Freemasons, through our work, awarded

1,219

grants to over

1,000

charities totaling

£7,918,123

a **39 per cent increase** in the value of grants and a significant

194 PER CENT

of the number of grants in comparison to 2019/20.

Head above water

Our funding increased dramatically to meet the rapidly-growing calls for help from small grassroots community groups as they endeavored to stay afloat and support their beneficiaries through the pandemic.



Hypo Hounds has been hit hard by the pandemic and if it was not for the continued support from the Masonic Charitable Foundation we may well have had to have closed services."

JANE PEARMAN

CEO and Founder, Hypo Hounds



Hypo Hounds
Hounds improving lives



The MCF's contribution towards core funding has meant Youthline's essential work can continue to meet the needs of young people with mental health problems, and their parents or carers. We have been able to ensure our service continued through this pandemic as the funding has given us the financial stability."

COLLETTE REYNOLDS

Practice Manager, Youthline

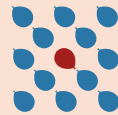
Youthline



The field of bereavement support is a scary one to be in for the foreseeable future. All our fundraising events had to be cancelled and many corporate supporters had to withdraw support to focus on their own survival. The MCF's funding ensured that we were able to continue to provide a service when many funding streams were disrupted."

SARAH BENNETT

CEO, Balloons



balloons

The Freemasons' COVID-19 Community Fund

In just 16 weeks, Freemasons met the challenge of raising £1 million for The Freemasons' COVID-19 Community Fund, an amount matched-funded by the MCF taking the total fund to over £2 million.

This additional funding was focused on three areas identified as underfunded and in need of increased support throughout the pandemic:



Homeless and vulnerably-housed communities

30 charities awarded grants totalling **£843,384**.



Unpaid carers

33 charities awarded grants totalling **£763,977**.



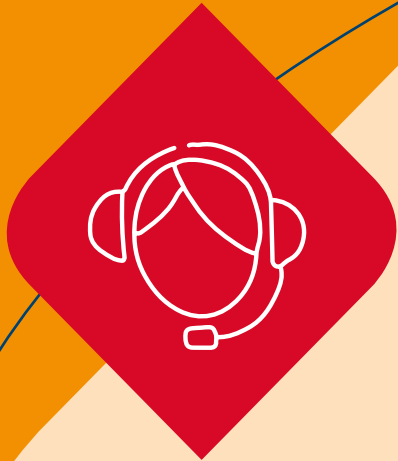
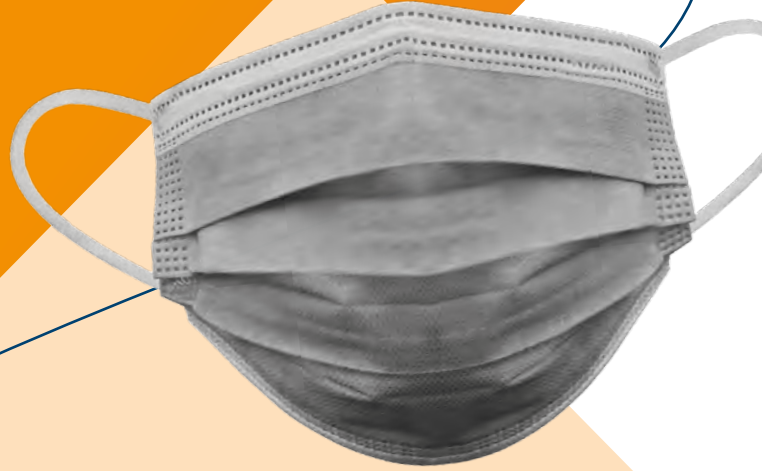
Children's mental health

This funding theme was launched at the end of the financial year with many charities applying for support. Grants will be awarded and reported in the next financial year.



Adapting our WAYS OF WORKING

When the coronavirus pandemic sent millions of households and organisations into lockdown, we stepped up and adapted our services to ensure those most vulnerable were supported through the crisis.



**More than
100**

**VVs completed
their online
training and could
once again work
with applicants
via telephone.**

Virtual Volunteers

Our Visiting Volunteer programme (VV), launched in 2016, helps make the application process as easy as possible for vulnerable and disadvantaged Freemasons and their families. Since then, hundreds of VVs across England and Wales have passed their training and carried out thousands of home visits to help people complete their applications for MCF support.

Although home visits were paused during the first few months of COVID-19 in order to protect VVs and the people they support, we were keen to find a way to re-involve our volunteers. We worked hard to adapt the application process and establish the training required to prepare VVs for their new role as 'virtual' Visiting Volunteers. This was facilitated by a new online training hub, which has allowed the VVs to access all of the information they need from the safety of their own home.

Expanding emergency grants

We continued to accept new enquiries and applications for support to cover daily living costs, and our use of 'emergency grants' was expanded to meet the short-term needs of beneficiaries arising as a result of the pandemic.

Smaller emergency grants of up to **£250** were established to cover any immediate needs of an individual or family whose income changed due to COVID-19. These emergency grants were intended for food

or other essential goods necessary to everyday life, and were awarded without the need to wait for a full application for support.

Discretionary support for up to **£3,000** was also available for emergencies arising from the pandemic, such as if an individual or family were at risk of arrears on household bills, or received threats of eviction.

Support for home schooling

Additional support was provided to all households that had school-age children at home, and were home schooling or socialising during the first lockdown.

IT equipment such as laptops, tablets and printers, as well as specialist educational software or apps required for children's wellbeing and education were offered to all children. We also provided a contribution towards the cost of school clothing for all primary and secondary school pupils, at the request of parents or guardians.

324
children and young people provided laptops and other IT equipment at a cost of
£171,150

Like millions of children, Summer and Paige spent much of the last 12 months learning at home as schools across the country closed their doors in the wake of the coronavirus pandemic.

And, like many other parents and carers, grandparents Terry and Elaine struggled to afford the unforeseen costs of home learning, so got in touch with us to see if we could help. As well as contributing towards the girls' day-to-day cost of living, we were able to provide the pair with a digital tablet, meaning they could access online resources, attend virtual lessons, and even continue their dance classes remotely.

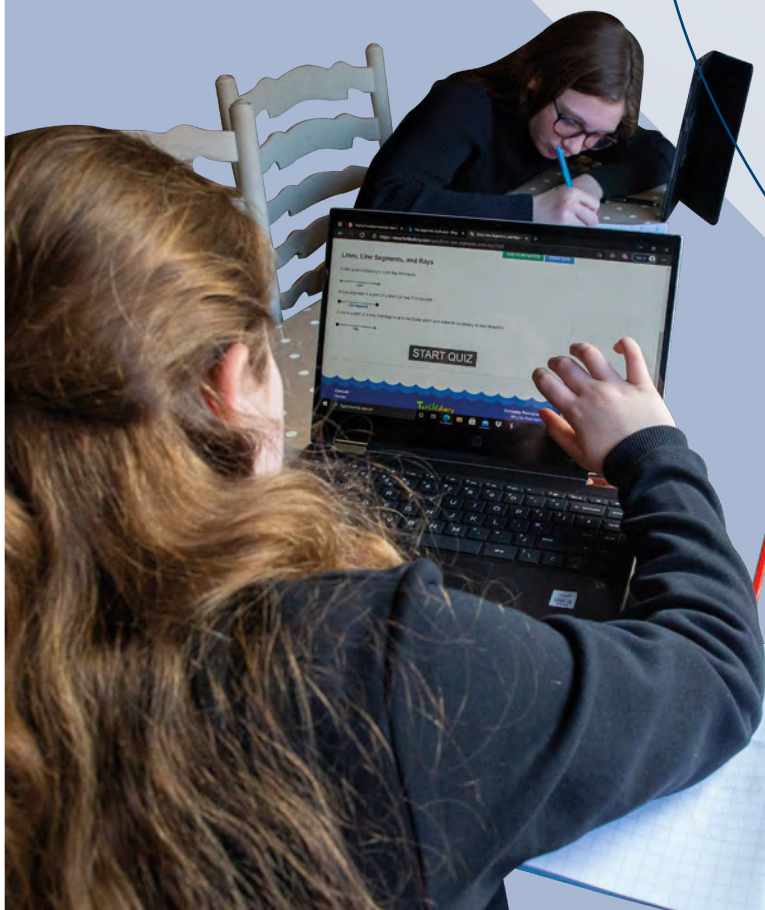


Having a tablet has really helped us to keep on top of communications from the school – from emails to video calls, we've been relying a lot on access to the Internet, so it's been really useful", says Grandad Terry. "It's meant they can get work and feedback from their teachers and that's helped them to keep up with their education."

It's not just school work the girls use their tablet for; Paige and Summer are both keen dancers and have competed at a national level.



We sometimes use it to do our dance classes on video calls," explains Paige. "It's helped us to keep dancing and training, and we like doing that in the evenings. We can't wait to go back to the studio for face-to-face lessons, though!"



Working in PARTNERSHIP



...with Freemasons

We built upon our close working relationship with Freemasons across England and Wales to identify local projects and charities in need of additional support through the pandemic.

We launched three new funding streams:

1

FESTIVAL GRANTS

Provinces – masonic boundaries similar to old counties – in an intensive five-year fundraising period known as a festival appeal, are now allocated additional funds to support local charities.

45 festival grants awarded totaling £94,152

2

MATCHED-FUNDING GRANTS

A Province making a donation locally can request for their donations to be matched-funded by the MCF, thereby doubling the total grant.

285 matched-funded grants awarded totaling £437,139

3

REGIONAL GROUP GRANTS

All 48 Provinces came together to form nine regional groups to help streamline and deliver support to communities in need. As a result of this partnership:

195 grants were made totaling

£1,003,117

of which

£228,116 went to supporting
**foodbanks or providing meals to
local communities**

£139,067 funded local
domestic abuse support services

£175,294 was spent on
purchasing or making essential **PPE**
and other COVID-19-related equipment

£176,818 was allocated to buying
IT equipment such as tablets for hospital
and care home residents to stay in touch
with loved ones



...with RMBI Care Company

Last year, RMBI Care Co. was home to 860 residents of which **235** received additional financial support from the MCF.

In a year that saw an increased spotlight on care homes, we increased our annual funding to RMBI Care Co. by

121.5 PER CENT,

taking our support to

£11.3 MILLION

helping to ensure the safety of staff, residents and visitors.



...with Teddies for Loving Care.

Teddies for Loving Care (TLC) continued to operate throughout the country, providing teddies as a source of comfort to children in A&E units.



Although locally-led by Freemasons, we provide central support and guidance to the TLC programmes. After 20 successful years of operation, last year we worked on rebranding TLC, which helped drive interest and engagement in the programme and provided every Provincial TLC programme with new teddy bears, posters, flyers and logos to help promote the scheme.

Celebrating five years as the **FREEMASONS' CHARITY**

We celebrated five years of building better lives across England, Wales and overseas on behalf of Freemasonry.

£90 MILLION

in grants awarded to support the most vulnerable and disadvantaged members of society,

That is nearly

£50,000

per day since 2016 or **£34 every minute.**

For every Freemason under the United Grand Lodge of England, we awarded around

£450

in charitable grants.

For every lodge in England and Wales, we awarded around

£13,000

in charitable grants.

Through legacies and festival fundraising, Freemasons donated an incredible

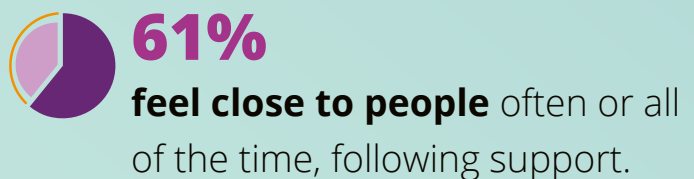
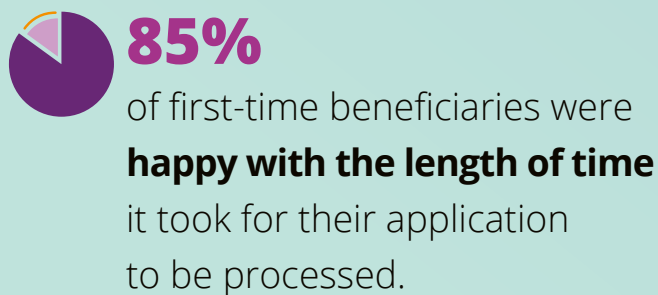
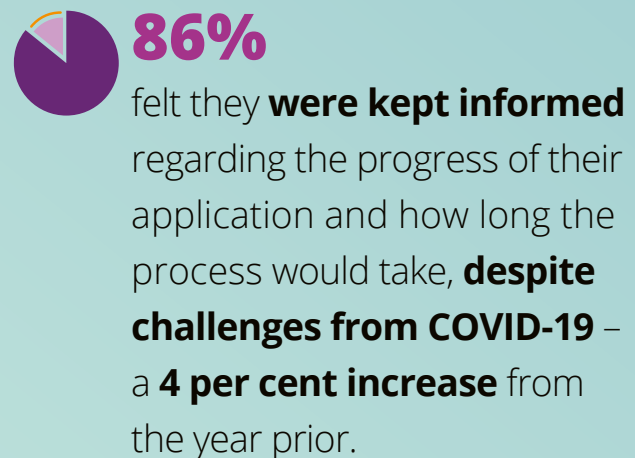
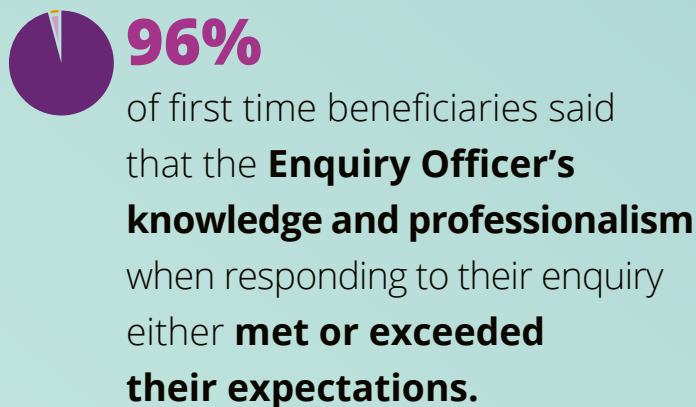
£60 MILLION

to ensure the continuation of our work.



What do our BENEFICIARIES THINK?

We surveyed 624 individuals and gathered feedback from local charities to help us understand just what our beneficiaries think of our work.

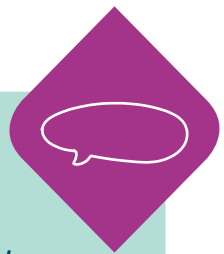




We're very grateful to Hampshire Freemasons for their generous grant, which will help us to provide a wonderful virtual camp experience to 1,400 seriously ill children who would otherwise have missed out because of the pandemic. Our camps are great fun for the children and have very positive long term effects on their self-confidence and mental health."

CEO

Over the Wall,
Hampshire and Isle of Wight



We're incredibly thankful to Staffordshire Freemasons for their funding, which will enable us to keep on providing our vital care services at a very difficult time. The hospice has been hit very hard, financially by the pandemic and this donation will help us continue to care for local people coping with the challenges of a terminal illness."

CEO

Katharine House Hospice,
Staffordshire



The funding and support from Freemasons will ensure we can work with and try to support in a variety of ways some of the most vulnerable people in society, without being tied to contracts or Local Authority boundaries. It will see volunteers, including local Freemasons, on the streets at night making a real impact across Lancashire. This role is pivotal in linking the most marginalised rough sleepers into external agencies, accommodation, and Emmaus where possible, helping them access the help and support they need."

DIRECTOR

Emmaus Burnley, East Lancashire

Our plans for NEXT YEAR

We have set out our goals and aspirations for 2021/22, a selection of which are shown below.



Supporting those in need

We will review our enquiry service to reflect the increased demand we are facing and to ensure we can best meet the needs of those approaching us for support.

Having been unable to achieve the objective during the pandemic we are committed to implementing an updated package of support for children and young people with mental health issues.



People and volunteers

We will support our staff to adapt to a new hybrid working strategy that allows them to benefit from greater flexibility in how and where they work.

We will host a national Provincial Grand Almoner conference for our regionally-based volunteers, bringing them together to offer support and guidance, share experiences and learn from one another.





Supporting charities in partnership with Provinces

We will enhance our relationships with Provincial charity representatives and develop more regular contact and long-term relationships with local charities that we support.

We will review our application process for charities to ensure we have efficient systems in place in order to shorten the application process timeframe and ensure greater impact.



Fundraising

We will develop a donor engagement strategy that will recognise how highly we value our donors, help us to understand their motivations and preferences, and build long-term trust between us.

We will create a fundraising toolkit for our fundraisers that equips them with the skills, guidance and best practice to help maximise returns from their fundraising activities.



Reaching out

We will work closely with the United Grand Lodge of England to deliver a shared vision for how the MCF can support those in need and promote the many positive aspects of Freemasonry.

We will bring our teams closer together and increase shared understanding of each other's activities through the development of departmental Communication Champions across the charity.



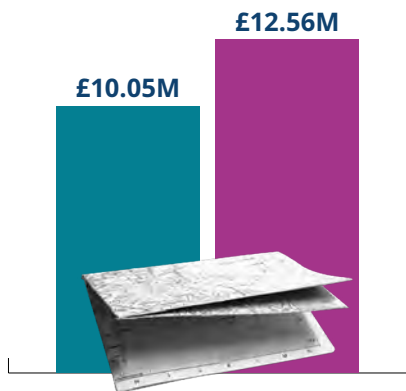
Money in, MONEY OUT

Our income comes from the generosity and efforts of Freemasons, their families and friends, past and present.

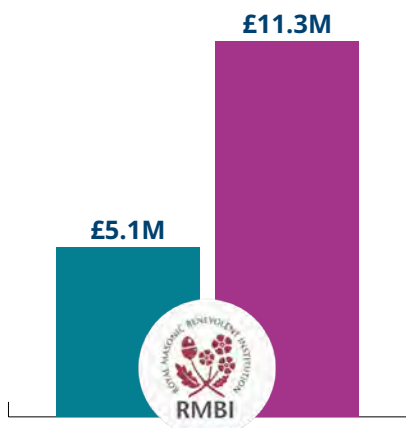
Last year saw an increase in our expenditure as we heightened our support for communities affected by COVID-19, on behalf of Freemasonry.



Of our total outgoings, **88 per cent** went to supporting vulnerable and disadvantaged members of society – an increase from **85 per cent** from the previous year.



£12.56M was spent on supporting local and national charities – an increase from **£10.05M** from the previous year.



Our support for RMBI Care Co. dramatically increased from **£5.1M** in 2019/20 to **£11.3M** in 2020/21 to respond to the challenges of COVID-19.



£30.24M

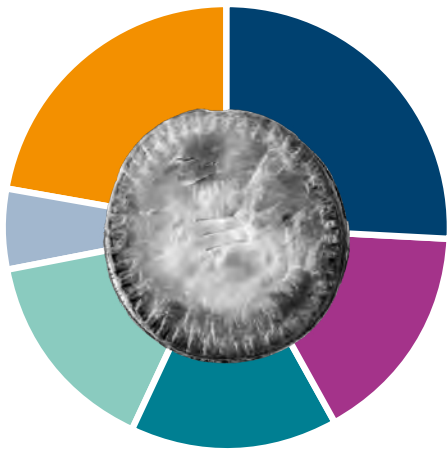
£23.07M

Expectedly, our income from fundraising and donations dipped from **£30.24M** in 2019/20 to **£23.07M** last year – a trend that is unsurprising given the financial and health climate of the year.

We are incredibly grateful for the significant £23M in donations that we received from Freemasons, their families and friends. The majority of this income came from Provincial festival appeals – an intense five-year fundraising period for a specific region and its members, in aid of the MCF.

Without the generosity of Freemasons, their families and friends we would not be able, year on year, to continue building better lives for the most vulnerable and disadvantaged members of society. For this, we are incredibly grateful and proud to be the Freemasons' charity.





2020/21 Income

£23.07M

Breakdown

£5.94M

Donations - Festivals

£3.59M

Legacies

£1.45M

Rental

£3.60M

Donations - Other

£3.48M

Annual Contributors

£5.01M

Investment

2020/21 Expenditure

£42.85M

Breakdown

£2.40M

Generating Funds

£12.56M

Charitable Grants

2.49M

Masonic Support

£11.50M

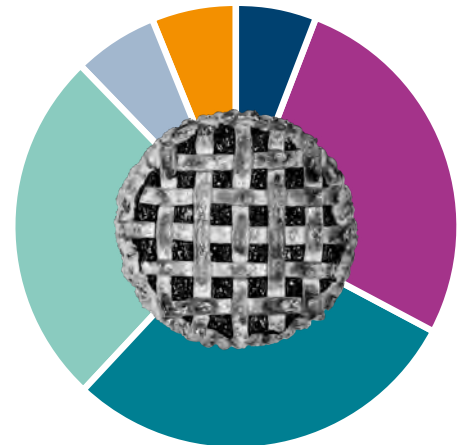
Masonic Grants

£11.30M

RMBI Support Grant

£2.60M

Charitable Overhead



About FREEMASONRY

One of the oldest social and charitable organisations in the world, Freemasonry's roots lie in the traditions of the medieval stonemasons who built our cathedrals and castles.

Freemasonry uses building analogies to teach members how to lead productive lives that benefit the communities that they live in. In the medieval era, stonemasons wore aprons and gloves to protect themselves while working on shaping rough pieces of stone, but in today's society Freemasons meet to build friendships and communities rather than cathedrals and castles.

For Freemasons, there are four important values that help define their path through life: Integrity, Friendship, Respect and Charity. In today's world filled with uncertainty, these principles ring as true now as they have at any point in the organisation's history.

Kindness and charitable giving are deeply ingrained within the principles of Freemasonry and the organisation provides the structure for members to make positive contributions to their communities and various causes through fundraising events or volunteer work.



Individuals can make an important contribution at local, national and global level by giving both their time and money.

United Grand Lodge of England (UGLE) is the governing body of Freemasonry in England, Wales, the Channel Islands, the Isle of Man and Districts overseas. It governs a membership of approximately 200,000 people meeting in more than 7,000 lodges across the globe. Membership is open to any man over the age of 18 irrespective of their background, race or religion.

UGLE's role is to provide structure, guidance and support to our members, while managing the administration of a centuries-old organisation.

For more information on Freemasonry and UGLE visit ugle.org.uk



DISCOVER THE FACTS AND FIGURES on how we helped your local community and spread the news!

Scan the QR code to read more and download a poster with bite-sized information tailored to your Province. You can display these in lodges or in offices, share on social media or share by email.



Grand President

HRH The Duke of Kent KG, Grand Master

President

Richard Hone QC

Deputy President and Chairman

Sir Paul Williams OBE, KStJ, DL

Trustees

John Boyington CBE	Christopher Head
Sinéad Brophy	Michael Heenan (Treasurer)
Charles Cunnington	Stephen Robinson
Timothy Dallas-Chapman	Ian Sabin
Simon Duckworth OBE, DL	Nigel Vaughan
Clive Emerson	David Watson
Dr Simon Fellerman	Andrew Wauchope
Alan Graham, MBE	Howard Wilson
Antony Harvey	

Chief Executive

Les Hutchinson

Operations Director

John McCrohan



Masonic
Charitable Foundation

Building better lives

60 Great Queen Street | London | WC2B 5AZ

Tel: 020 3146 3333 | info@mcf.org.uk

mcf.org.uk

Charity number 1164703. Company number 09751836.